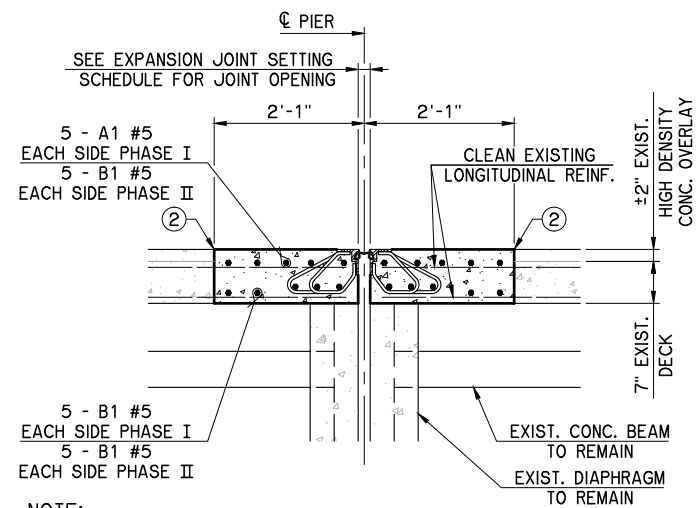
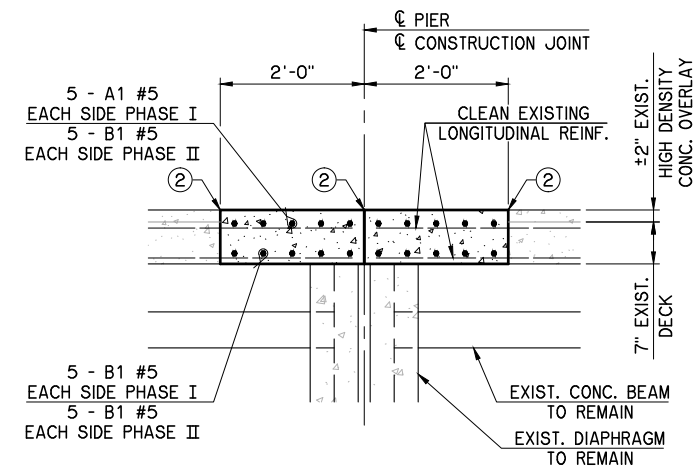


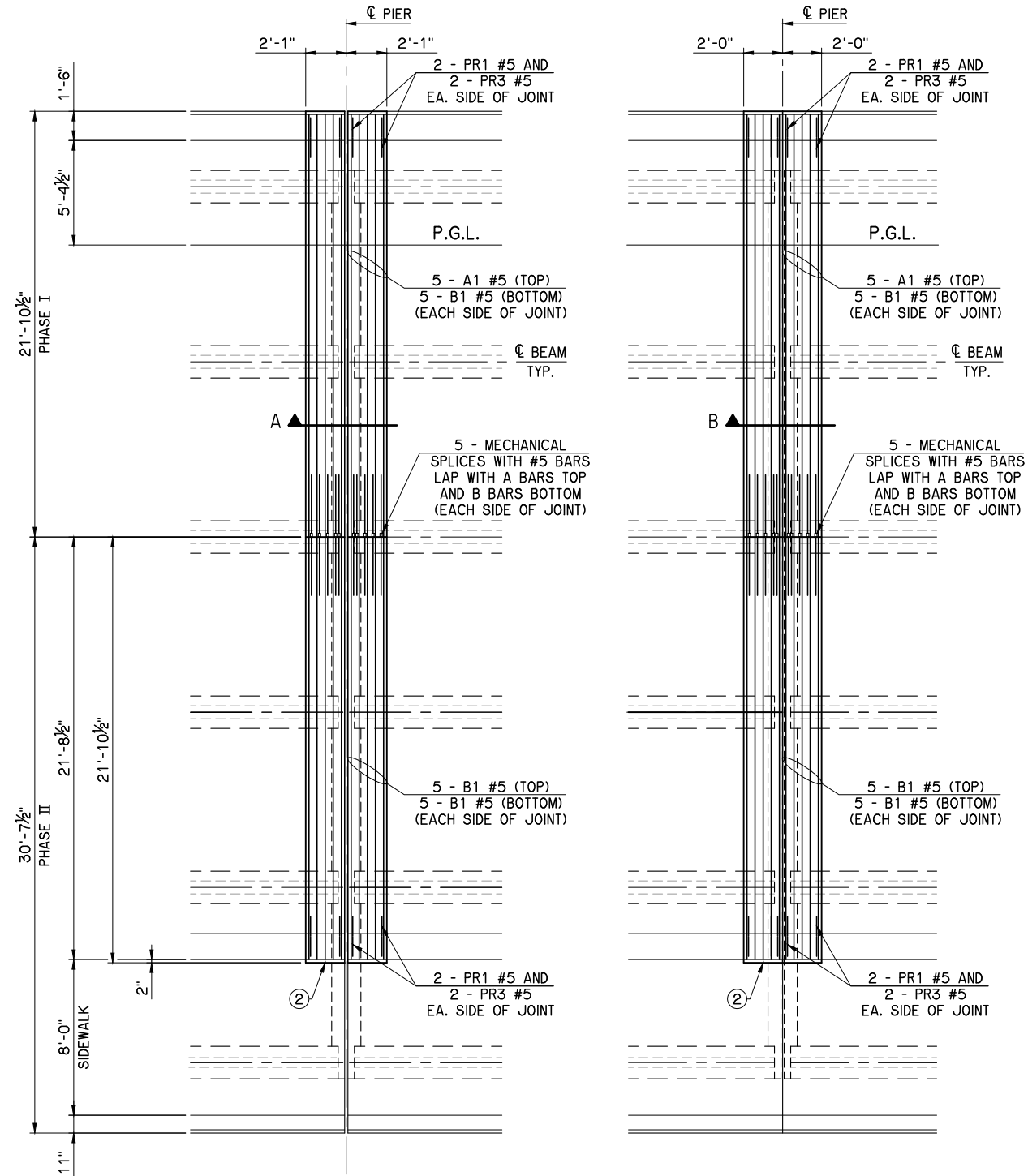
REVISIONS		
REV. NO.	DESCRIPTION	DATE



SECTION A



SECTION B



EXPANSION PIER FIXED PIER

**DECK REINFORCING PLAN AT PIERS
FOR CLASS C DECK REPAIR**

② SEAL WITH HIGH MOLECULAR WEIGHT METHACRYLATE.

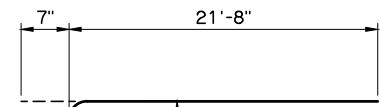
**CLASS C DECK REPAIR BAR LIST
PHASE I**

MARK	SIZE	NO.	FORM	LENGTH
PLAIN REINFORCING				
A1	#5	240	BNT.	22'-3"
B1	#5	240	STR.	21'-8"
PR1	#5	96	BNT.	3'-4"
PR3	#5	96	BNT.	2'-7"

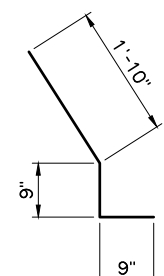
**CLASS C DECK REPAIR BAR LIST
PHASE II**

MARK	SIZE	NO.	FORM	LENGTH
PLAIN REINFORCING				
B1	#5	480	STR.	21'-8"
PR1	#5	96	BNT.	3'-4"
PR3	#5	96	BNT.	2'-7"

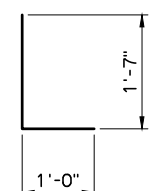
① ROTATE BARS TO MAINTAIN CLEARANCE.



A1 #5 x 22'-3"



PR1 #5 x 3'-4"



PR3 #5 x 2'-7"

SH 51 NB OVER ARKANSAS RIVER	TULSA COUNTY	Design	ADT
DECK REPAIR DETAILS		Detail	FEZ
		Check	ADT
		WHITE ENGINEERING ASSOCIATES	
STATE OF OKLAHOMA	DEPARTMENT OF TRANSPORTATION		
JOB PIECE NO. 31358(04)		SHEET NO. 31	